

## Phase 1

- Cage had 9 spokes with no label
- Models characterised by Art Nouveau floral decoration, extant till 1914 and after WW1 designs more bland
- The 9 spokes are wound round the inner and outer rings (this form of attachment distinguishes them from later models and as “early Marellis”)
- The oscillator model had 12 spokes
- The oscillator must be >1912 based on the patent (filed 1912 & publ. 1915)
- Most early Marellis had cages and blades in brass only
- At least 3 types of design.
  - Type 1; floral scroll design on base only with no ventilation holes in head
  - Type 2; floral scroll design on base and head (with ventilation holes)
  - Type 3; no floral design and no ventilation holes (ie, oscillator)
- All models had tab feet
- No name tags on cage
- Marelli was manufacturing for other companies and so fans such as the GE Freezor Fan (UK) is sourced from the early Marellis

**Key Indicators: Floral “Art Nouveau decoration and unique wirework on cage**

Phase 1 <1918



Phase 1 Marellis Prepared by Simon Cutting

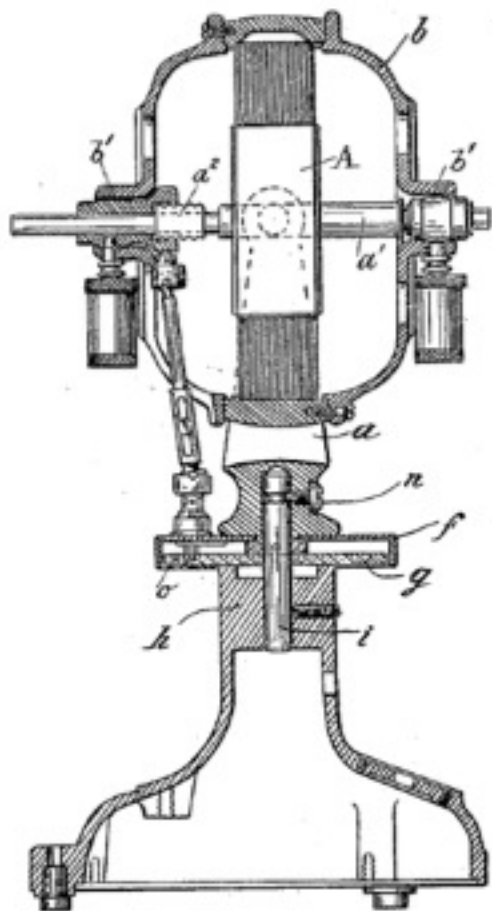


### Early Marelli <1910

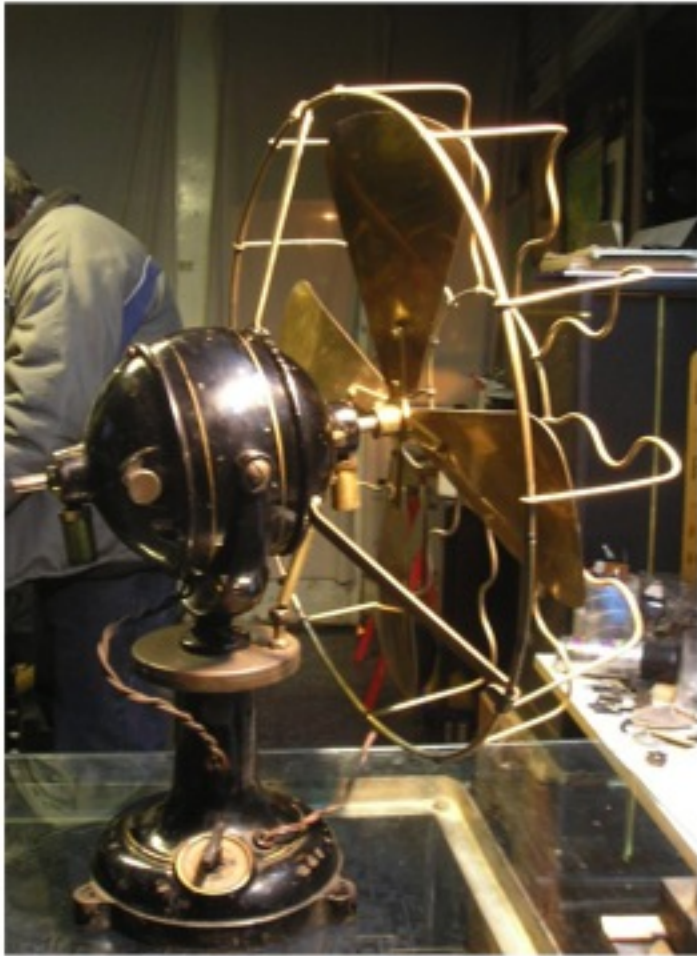
Floral head and base. Pizza  
blades 30 cm tip-to-tip  
Original cage



## Phase 1 Oscillators



Patent filed 1912  
Patent granted 1915



12 spokes

No ventilation holes

No floral "Nouveau" design



