

Phase 3

- Tab base is replaced by a round base
- 9-spoke cage
- Blades (4) are round ended and 25cm, 30cm or 40cm
- Most had transfer label “MARELLI” on head or brass tag (Ercole Marelli CSA)
- Many had gold pin-striping on head and on base
- Oscillator models use a up-down lever switch attached to head to engage oscillation on the motor head
- Motor head is ‘ball head’ or ‘pancake head’
- Ball head accomodates the brushed motor
- Smallest models have lever switch, larger models (30cm +) have ‘hammer head’ rotary switch

Key indicators: Round base, 9-spoke cage

Diameter of blades* tip-to-tip

	25cm	30cm	35cm	40cm	
Fixed	?	?		?	
Inclinable	Yankee	Nembo?		Nembo?	
Oscillating	Delio	Bisa		Ghibli	

*round end blades

Phase 3 1925-1930



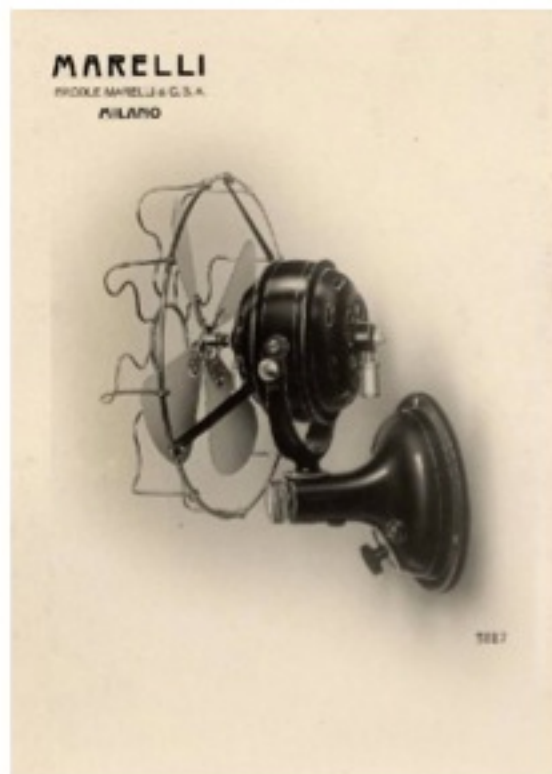
Yankee

25cm blades inclinable head

Phase 3 1925-1930 *Inclinable (ball head or pancake)*

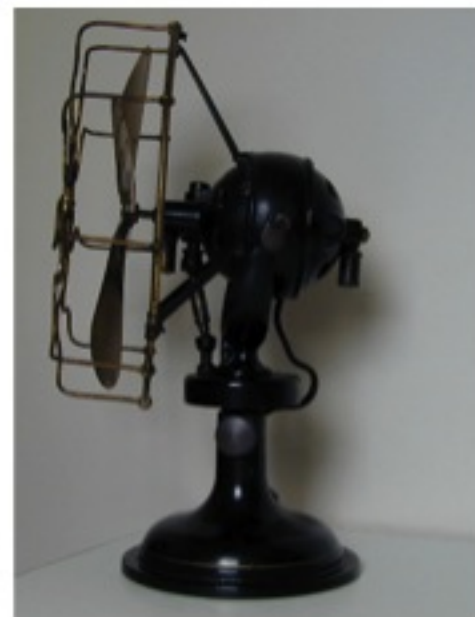
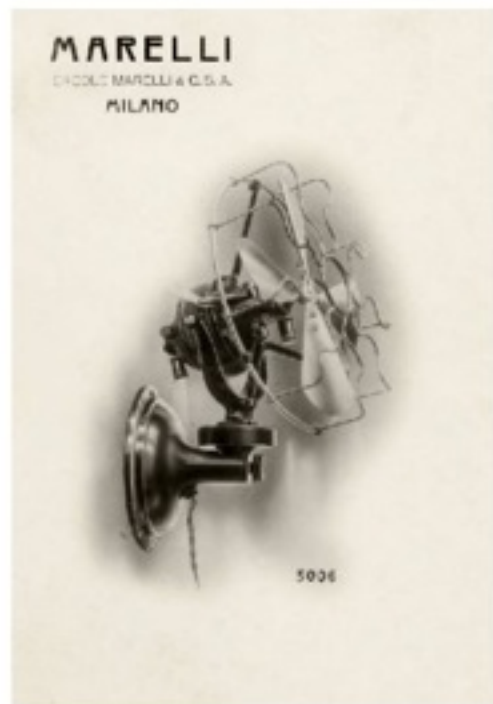


“Yankee”



**“Nembo”
(either 30 or 40cm blades)**

Phase 3 1925-1930 *Oscillators (ball head or pancake)*



Delio (25 cm blades)

Delio (25cm blades) **Bisa** (30cm blades) **Ghibli** (40cm blades)

The Delio came in a 'ball-head' type only.

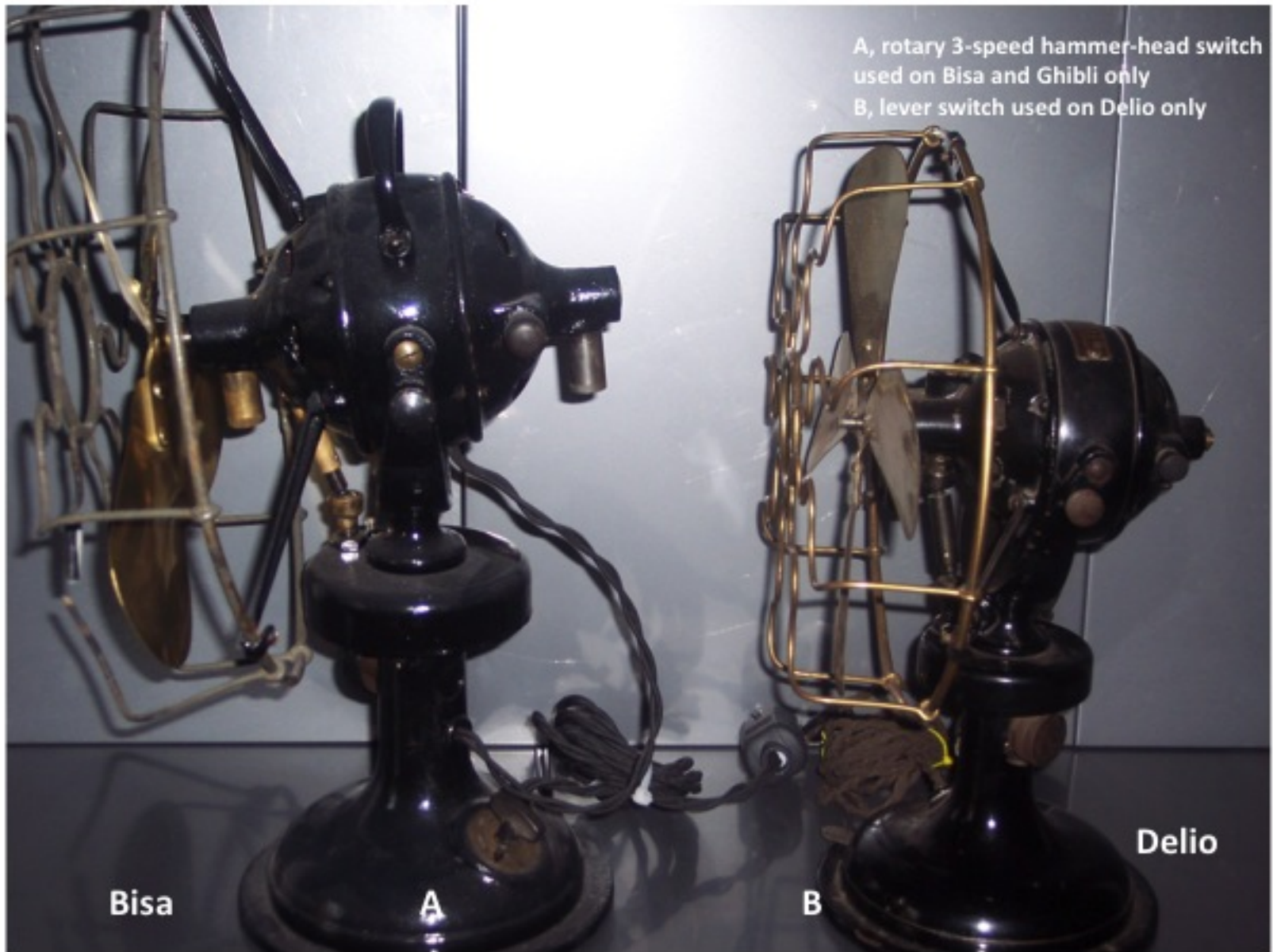
The characteristic of the Delio is the slanting trunnion.

Delio



A, lever switch to engage oscillator gears
B, cup to apply gear oil
C, slanted trunnion characteristic of
Delio model only

Phase 3 Marellis Prepared by Simon M.
Cutting



Bisa (ball headed motor, 30cm blades) and **Delio** (25cm blades)

Bisa Pancake head (30 cm blades)



Ghibli Ball head



Ghibli and **Bisa** side by side



Phase 2 and Phase 3 Cage Tags

The cage tags can easily be lost and this is confused further by adverts showing Marellis with or without tags.

For the phase 3 models they mostly carried the cage tag shown below. Here the name Marelli stands proud and the background in black is recessed. These tags were nickel plated or left in brass. Very often they have been repolished and the black background is lost.



The motor heads usually carried brass tags stating Ercole Marelli & CSA or lettering stating MARELLI (this was either a gold-decal transfer or possibly hand/machine painted). It also is apparent that some of these fans lacked tags completely. The reason is unclear but may reflect the country to which the fan was exported to where possibly a 3rd party or licensee was involved but this is pure speculation.





A Marelli **"Special"**

Double headed Partners Fan
Based on a BISA model, 30cm
Blades. Rotates 180°.