

## Phase 5

~1932-1942?

- Basic motor head shape retained but smaller and more refined than the phase 4 version
- Cage now carries 8 spokes
- Cage size 25, 30, 35 and 40cm
- Blade shaped changes to a distinctive asymmetrical shape, but still 4 blades
- One noticeable feature is the absence of oilers, the phase 5 models carry the oiling mechanism as a felt-fibre wick hidden under a central ring on the shaft
- No brushed motors
- Tag riveted to motor head with model and serial number
- All models have lever switches
- Models no longer carry names but letter-number configuration, eg,
  - I-25 for an **I**nclinable (Italian = *Inclinabili*) motor head with blades of 25cm
  - O-30 for an **O**scillating (Italian = *Oscillanti*) motor head with 30cm blades
  - F-40 for a **F**ixed (Italian = *Fisso*) head of 40cm
- The French company A.R.C.E. begin to produce Marellis as a license in France
- A.R.C.E. Marellis have some differences, e.g., many had **steel** cages rather than **brass**, different labels and inferior trim.

**Key indicators: Asymmetric blades, 8-spoke cage, no external oilers**

### Diameter of blades\* tip-to-tip

	20cm	25cm	30cm	35cm	40cm
<i>Fixed</i>	-	F-25	F-30	F-35	F-40
<i>Inclinable</i>	Diana	I-25	I-30	I-35	I-40
<i>Oscillating</i>	-	O-25	O-30	O-35	O-40

\*asymmetric style blades

The body of these fans is similar to the phase 4 Marellis but the motor head is smaller and less bulky. The oilers are internalised and the struts are of different design.

## F-25 (25cm blades)

Manufactured in Paris, 8-spoke **steel**\* cage typical of many French-produced Marellis



\*many Marelli cages manufactured in France were made of **steel** rather than **brass**.

## Phase 5: *Inclinable*

*"Diana": a uniquely small desk fan*



Single speed, brushed motor  
Cage has either 6 or 7 spokes  
Painted black or maroon. Blades/cages brass or chrome plated  
This is the only 'phase 5' Marelli that carries a name rather than a letter-number descriptor

**A**, shaft oiling achieved by a fibre wick held behind this circular metal cover front and back, replacing the screw-in (external) oilers of previous models



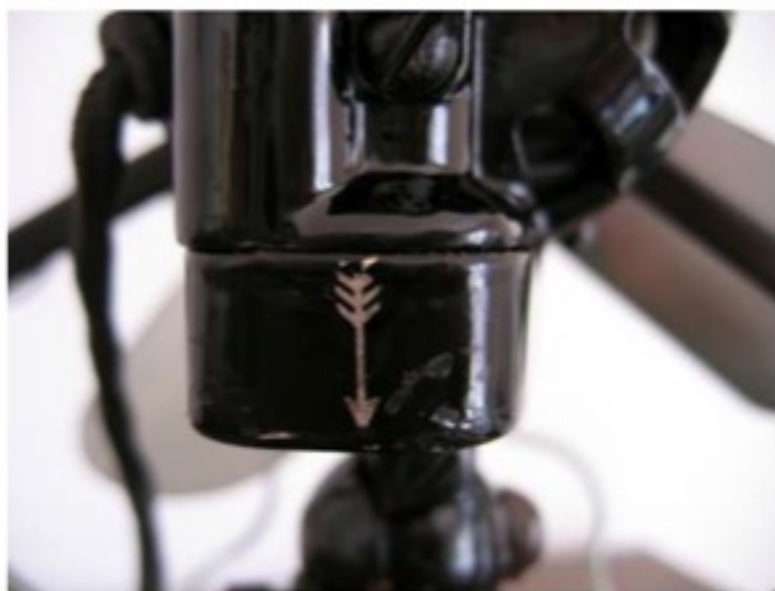
***Diana***  
7-spokes



### ***Diana***

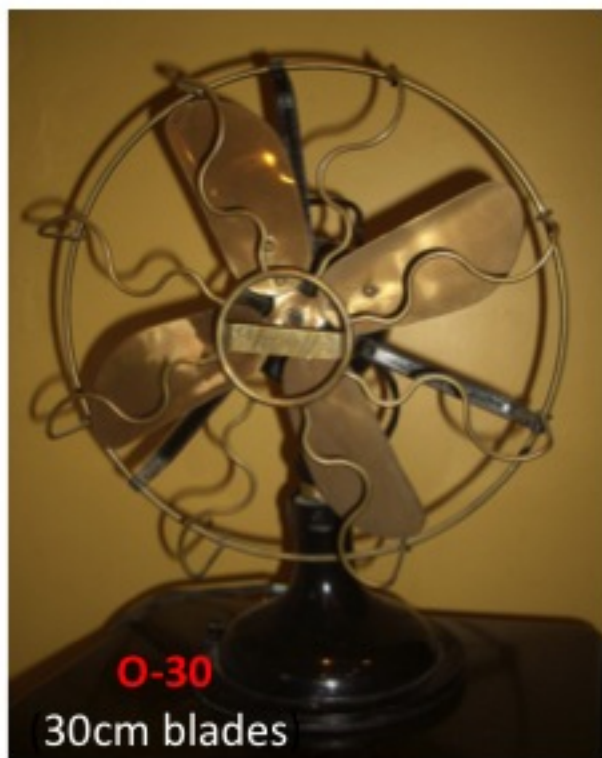
6 spokes and original colours

20cm blades (the smallest Marelli ever made!)



**O-25** Oscillator (25cm blades)

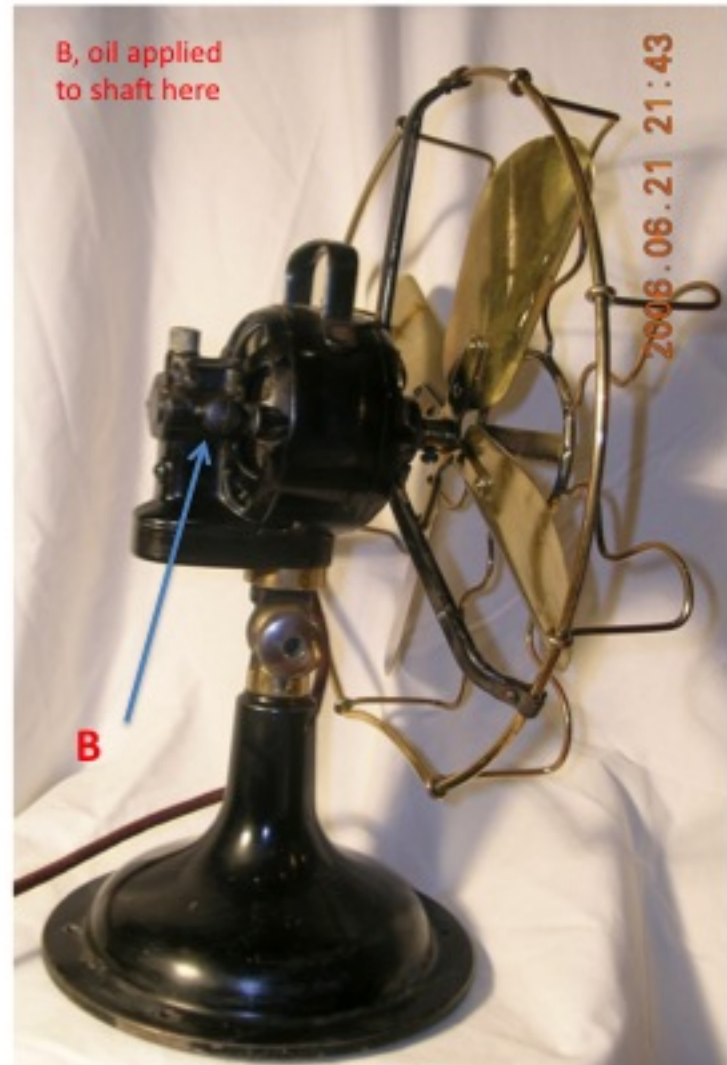
## Phase 5 *Oscillators*







0-30



0-30

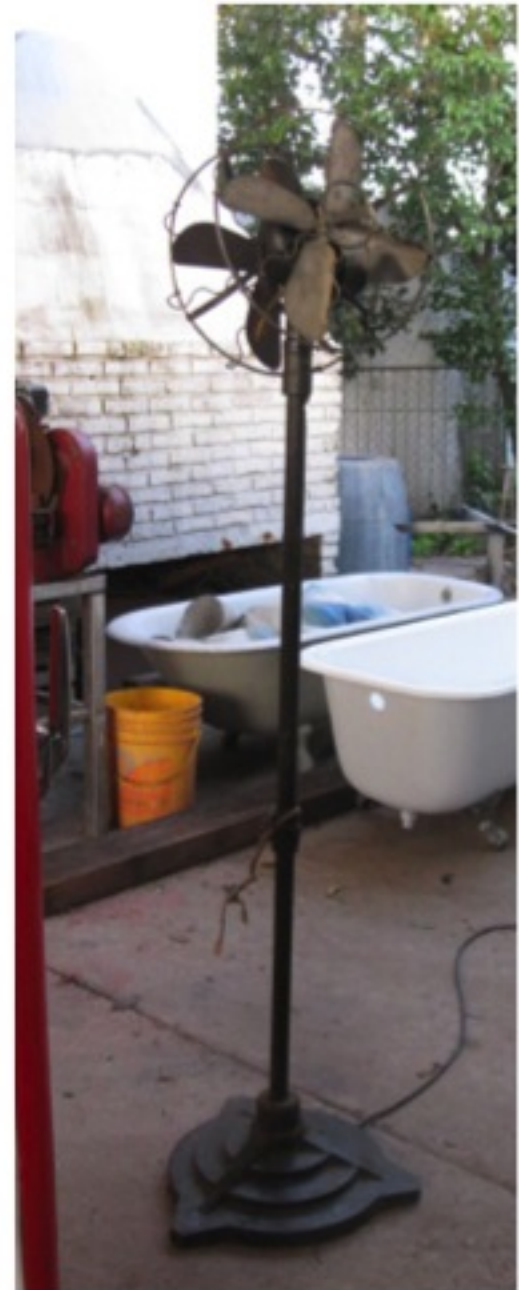


Indentation on bottom of cage prevents damage to paintwork

This was specified on order as was brass or chromed cage

Cage always 8 spokes

## The 1937 C/35



Phase 5 Marellis Prepared by Simon Cutting



**The DR 14**  
Rotates 360 degrees



Phase 5 Marellis Prepared by Simon Cutting